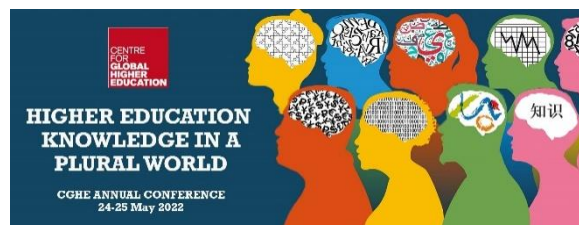


CGHE Annual Conference 24-25 May 2022: Session details



Mapping the supranational higher education space

24 May 2022, 10.30-11.30am (UK)

Chair: Janja Komljenovic

Speakers: Tristan McCowan, Rachel Brooks, David Mills, Maia Chankseliani, Lee Rensimer, Natia Sopromadze and Natasha Robinson

Across an increasingly complex and dynamic global higher education system, researchers and policy analysts are revising their analytical framings and spatial imaginaries. This panel showcases a CGHE research project that explores four different examples of the 'supranational' as manifested in higher education policy and practice. One explores how the European Universities Initiative (EUI) is reimagining Europe as a higher education space, a second offers an analysis of the flows of global HE aid to specific national HE systems, a third explores the role of international funding and knowledge flows in the development of higher education and research in the Caucasus and Central Asia, whilst a fourth tracks the emerging Africa-China nexus of scholarship funding and training collaborations. After a brief introduction to the 'supranational', each project will explain how it is making sense of these supranational dynamics, and the changes to higher education that result. The panel will then open up a broader conversation about the links between these spaces and flows of ideas, people, policy and funding.

Janja Komljenovic is a Senior Lecturer in Higher Education at Lancaster University and a member of the CGHE Research Management Committee.

Tristan McCowan is Professor of International Education at IOE, UCL's Faculty of Education and Society and a CGHE Co-Investigator on Project 9, 'Mapping supranational higher education space'.

Rachel Brooks is a CGHE Co-Investigator on Project 9, 'Mapping supranational higher education space'.

David Mills is Deputy Director of CGHE. An Associate Professor in the Department of Education at Oxford, he is also a CGHE Co-Investigator on Project 9, 'Mapping supranational higher education space'.

Maia Chankseliani is Associate Professor of Comparative and International Education at the University of Oxford and at CGHE she leads Project 9, 'Mapping supranational higher education space'.

Lee Rensimer is a Research Fellow at IOE, UCL's Faculty of Education and Society and a CGHE Research Fellow on Project 9, 'Mapping supranational higher education space'.

Natia Sopromadze is a Postdoctoral Research Officer on CGHE Project 9, 'Mapping supranational higher education space'.

Natasha Robinson is a Postdoctoral Research Officer on Project 9, 'Mapping supranational higher education space'.